



PERSIMMON

Drawing Title

Timber Frame Construction Detail
Fire Stopping To Party Wall

Rev. Description

A Floor type note added.

Date

26.08.20

By

MB

Drawing Scale

1:10 @ A4

Dwg. No.

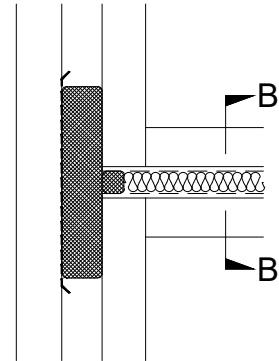
TF-D-1-21

Date

23.06.20

Rev.

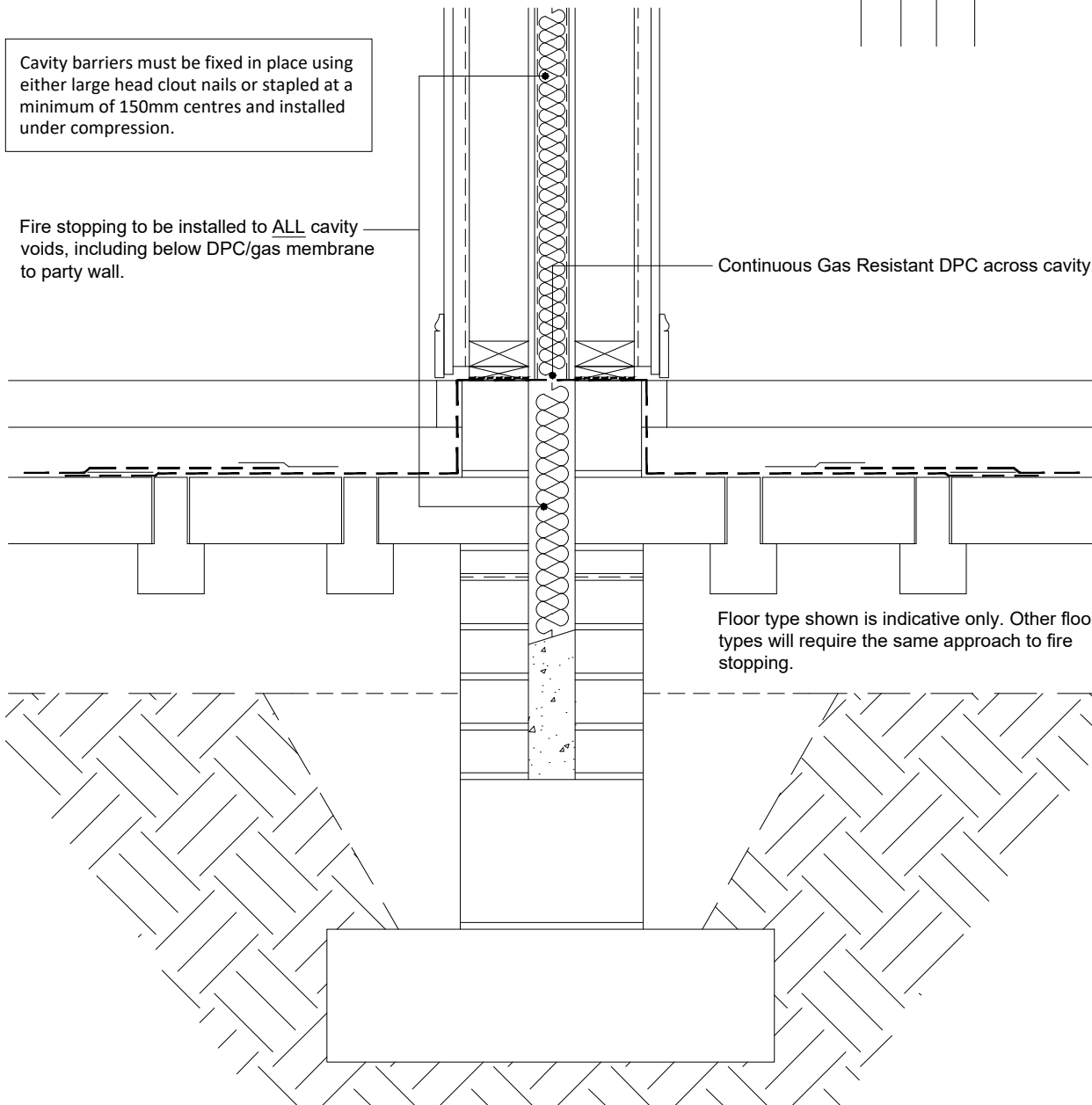
A



Cavity barriers must be fixed in place using either large head clout nails or stapled at a minimum of 150mm centres and installed under compression.

Fire stopping to be installed to ALL cavity voids, including below DPC/gas membrane to party wall.

Continuous Gas Resistant DPC across cavity..



Floor type shown is indicative only. Other floor types will require the same approach to fire stopping.

Party Wall Fire Stopping Detail - Section B-B